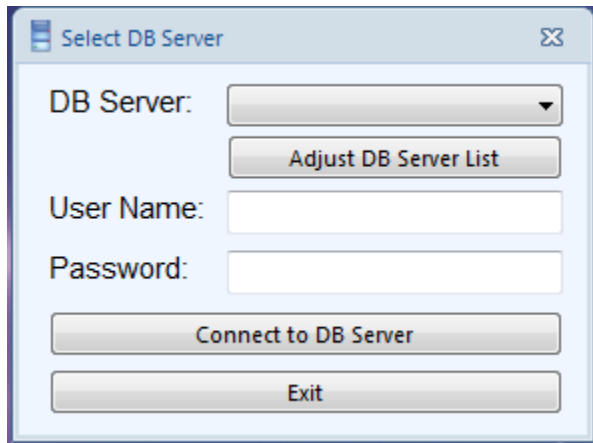


SQL Column Search

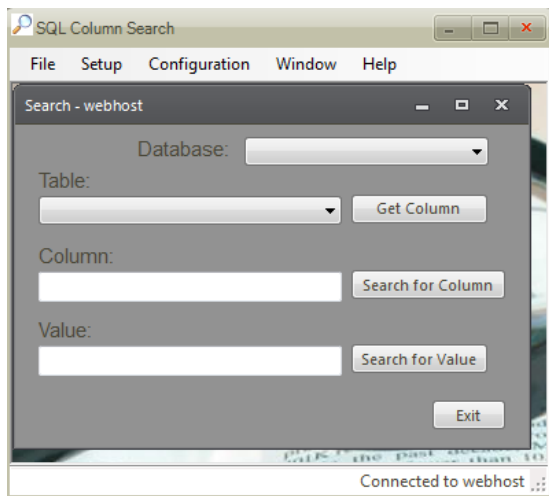


The DB Server drop down contains all the saved database server names and credentials.

Select a DB Server from the list, use the pre-saved credentials or type in new ones.

Press the Connect to DB Server button to open the search form and main application window.

Press the Adjust DB Server List button to bring up the following dialog form for adjusting the saved list of DB servers.

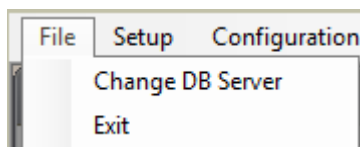


This is the main application window. The Database drop down displays a list of databases accessible on the Server. The Table drop down is only for the button beside it which gives a list of columns in that table.

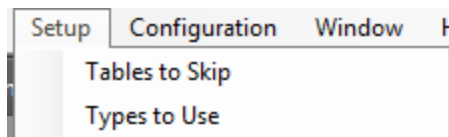
The Column entry is the main focus of the application. Use it to search the database structure for columns or stored proc. parameters. Press the Search for Column button to start the search.

The Value entry is the second focus of the application. This search pulls off the Column entry to allow you to search the found columns for a value of data.

The Search for Value button executes that last search.

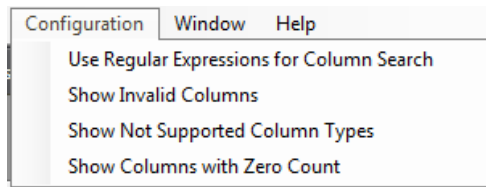


Change DB Server brings up the initial dialog allowing you to either connect to a new database server or to refresh the current connection should someone make a structure change to a database on the server you are currently connected to.



The Tables to Skip option displays a list of all the tables in the selected database and allows you to skip them in the value search.

The Types to Use option displays a list of data types and allows you to drop any from the value search.



The Use Regular Expressions for Column Search allows you to use regular expressions in the Column entry text box. The expression entered will be used in both the Column Search and the Value Search. Unchecked by default.

Show Invalid Columns – Show results from the Value Search where the value being searched for would be invalid for the column data type found. For example, an integer column would be an invalid column for an alphanumeric Value Search. Unchecked by default.

Show Not Supported Column Types – Show results from the Value Search where the column data type found cannot be searched by the application. Unchecked by default.

Show Columns with Zero Count – Show results from the Value Search where the row count is zero for the column found. Unchecked by default.

| Table | Column | Type | Row Count |
|---------------------|------------|--------------|-----------|
| Categories(U) | CategoryID | int (4) | 1 |
| Employees(U) | EmployeeID | int (4) | 1 |
| Employee Termini... | EmployeeID | int (4) | 2 |
| Order Details(U) | ProductID | int (4) | 38 |
| Order Details(U) | Quantity | smallint (2) | 17 |
| Orders(U) | EmployeeID | int (4) | 123 |
| Orders(U) | ShipVia | int (4) | 249 |
| Products(U) | CategoryID | int (4) | 12 |
| Products(U) | ProductID | int (4) | 1 |
| Products(U) | SupplierID | int (4) | 3 |
| Region(U) | RegionID | int (4) | 1 |
| Shippers(U) | ShipperID | int (4) | 1 |
| Suppliers(U) | SupplierID | int (4) | 1 |

Example Value Search Results

Double click on a line in the grid to see the actual data row(s).