



Remote MSI Manager – User Guide

Table of Contents

I.	What is «Remote MSI Manager»	2
II.	How to install «Remote MSI Manager»	2
III.	Searching MSI on local computer.....	2
IV.	Adding firewall rule	3
V.	Adding a remote computer	4
VI.	Displaying informations on a MSI Product.....	5
VII.	Filtering display	6
VIII.	Using WildCards	7
IX.	Uninstalling MSI Products	9
X.	Installing a MSI Product.....	9
Figure 1:	The Hourglass state that a search is in progress for the selected computer	2
Figure 2:	MSI Products are displayed in the right pan	3
Figure 3:	Create the GPO.....	3
Figure 4:	Set the GPO	4
Figure 5:	The green dot close to the computer name, gives information on the reachability	4
Figure 6:	A new search is immediately started	5
Figure 7:	Displayed informations on a MSI Product.....	6
Figure 8:	Filtering on one product.....	6
Figure 9:	Displaying more than one product.....	7
Figure 10:	Displaying all Java 6,7,8.....	7
Figure 11:	All 32bit Java 8 Update 7x	8
Figure 12:	All Java 8 Update 7x, whatever the bitness.....	8
Figure 13:	All Java except Java 8 Update 74, whatever the bitness.....	9
Figure 14:	Uninstalling two products	9



I. What is «Remote MSI Manager»

Remote MSI Manager is an application that allows Administrators to see which MSI Products are installed on their computer or remote computers. It use the WMI class «Win32_Product». You need to have Admin right on remote computers.

The latest release of Remote MSI Manager can be found on CodePlex Web site.

<https://remotemsimanager.codeplex.com/>

II. How to install «Remote MSI Manager»

Just download it from CodePlex and run it! You only need .Net Framework 4.0 to be installed.

III. Searching MSI on local computer

When you start Remote MSI Manager, your computer is automatically added to the computer list. An asynchronous search is also started:

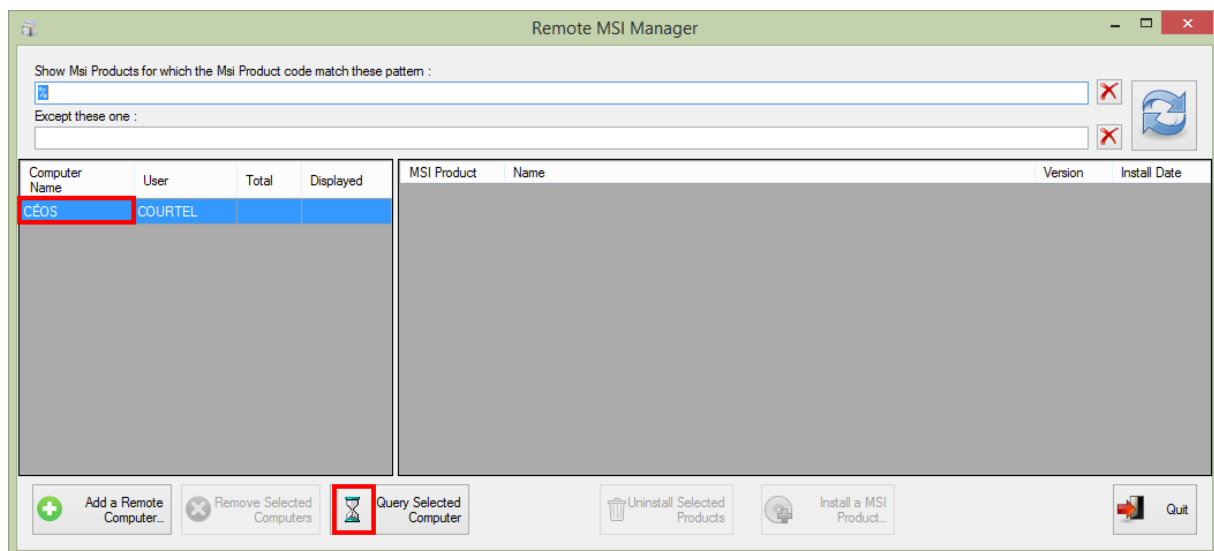


Figure 1: The Hourglass state that a search is in progress for the selected computer

The search is based on a WMI query against the Win32_Product.



Once the search is completed, installed products are displayed in the right pan:

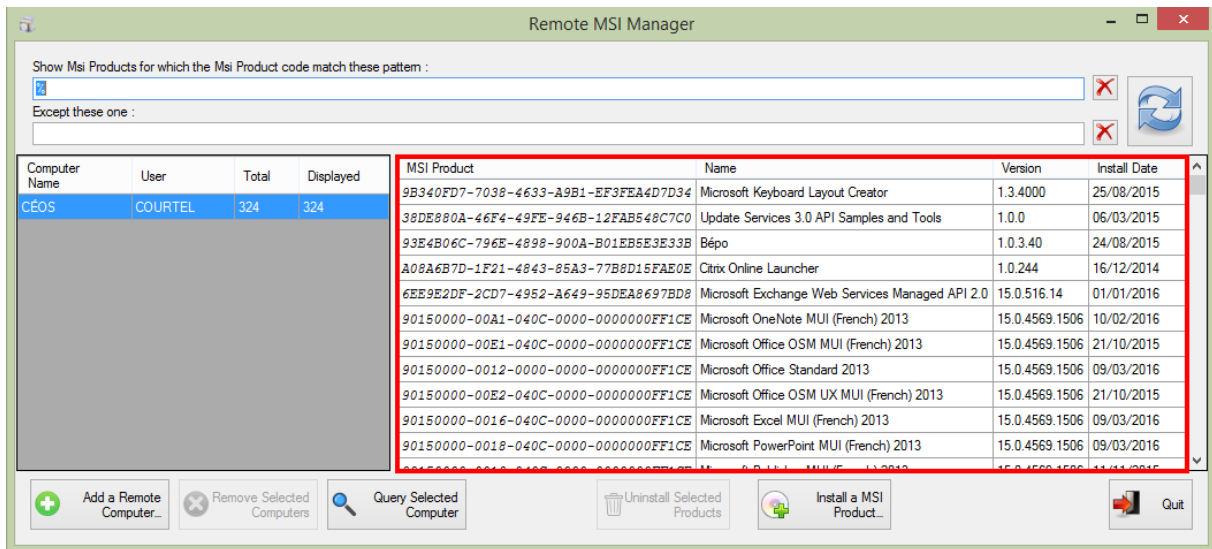


Figure 2: MSI Products are displayed in the right pan

IV. Adding firewall rule

If the Windows Firewall is enable, you need to allow «remote administration exception». There is a GPO to do that.

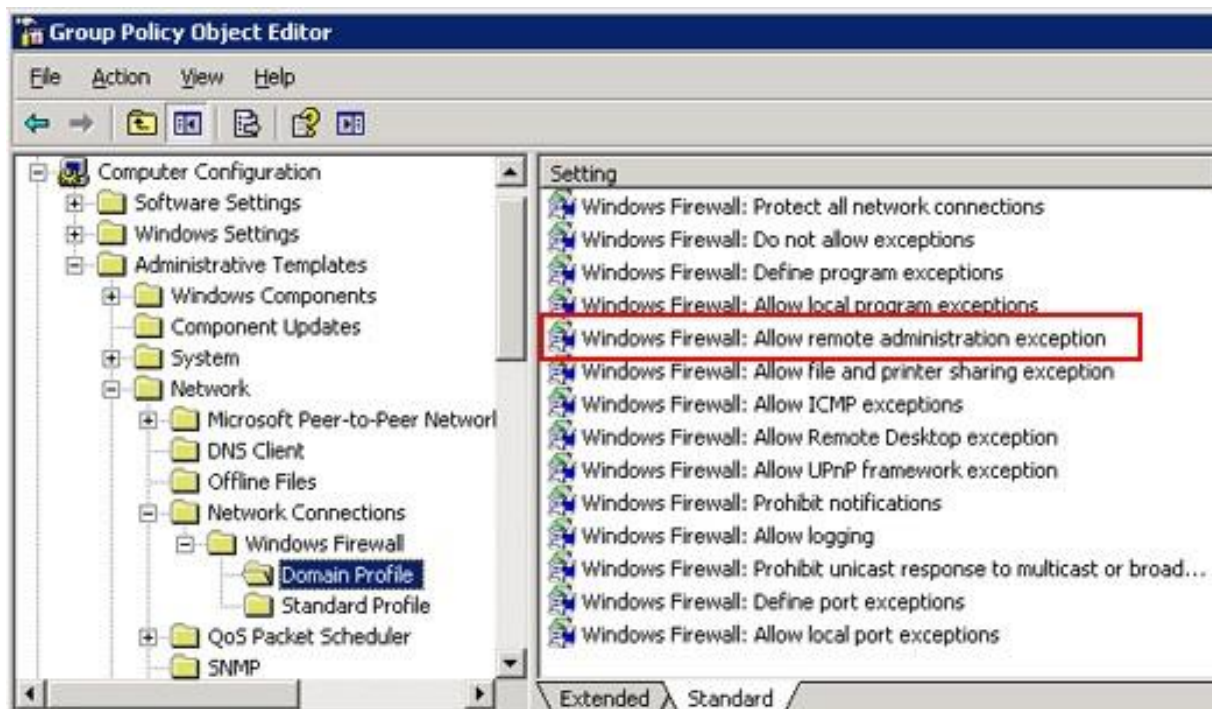


Figure 3: Create the GPO

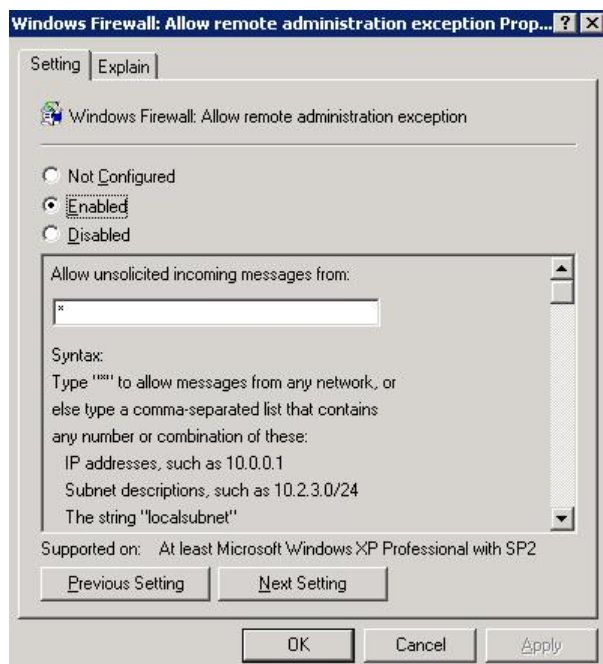


Figure 4: Set the GPO

Enable the policy and, in the textbox, write the IP address of the computer where the application run or a subnet or "" for all IP address.*

Ask the security admin to know the Enterprise policy.

For other Firewall, see the manufacturer's guide.

V. Adding a remote computer

Click on the «Add a Remote Computer» button and fill all fields on the new Window.

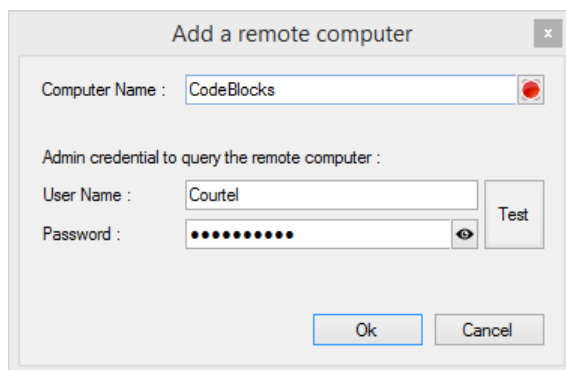


Figure 5: The green dot close to the computer name, gives information on the reachability

Once the new computer have been added, a new search is started. To edit credentials used to query the computer, double-click on the computer.

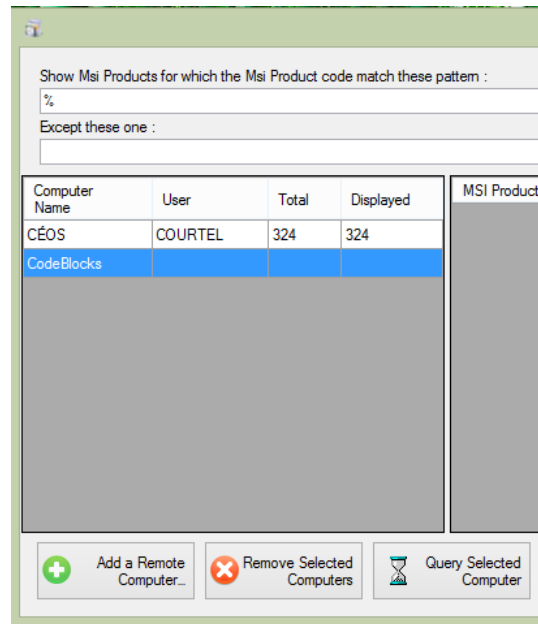
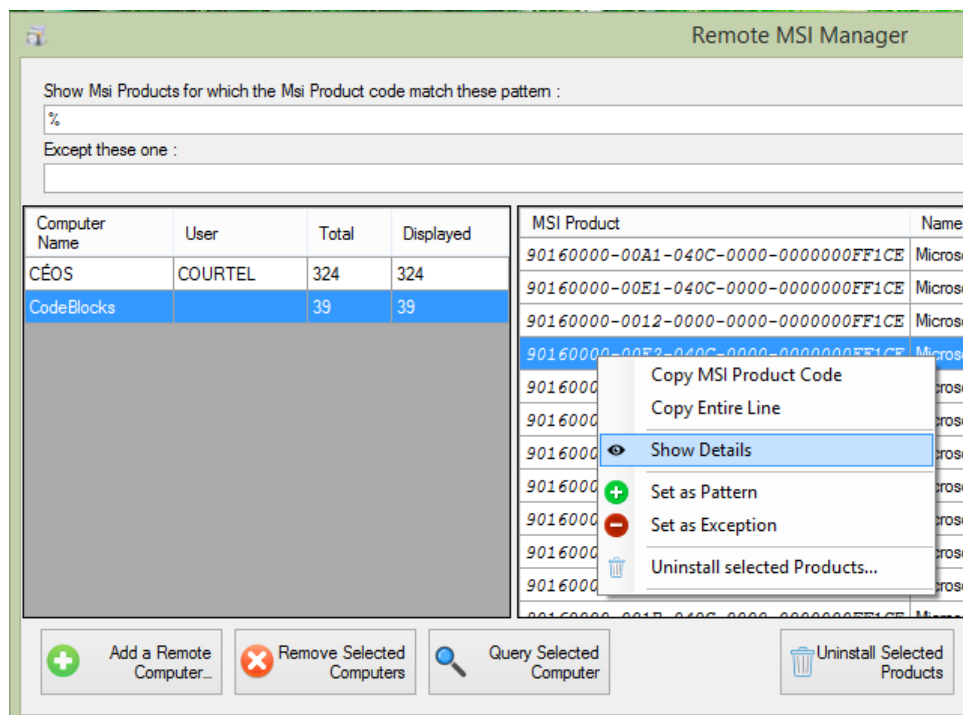


Figure 6: A new search is immediately started

VI. Displaying informations on a MSI Product

Double-click on a MSI Product, or right-click and chose «Show Details» to display all available informations on this item.



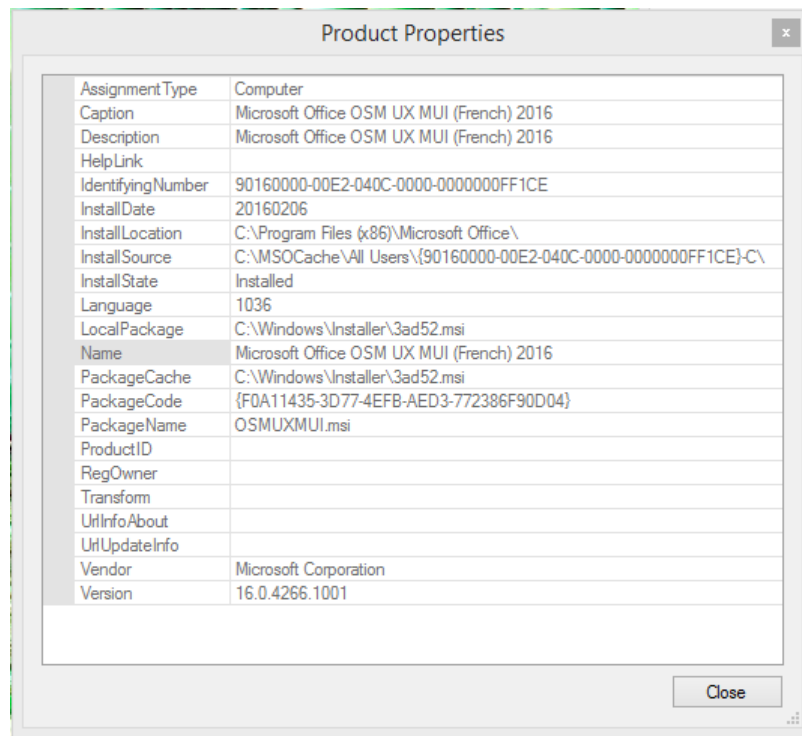


Figure 7: Displayed informations on a MSI Product

VII. Filtering display

You can filter the result by using the two TextBox on the top of the application. Set a MSI Product Code in the upper TextBox to see only this MSI Product.

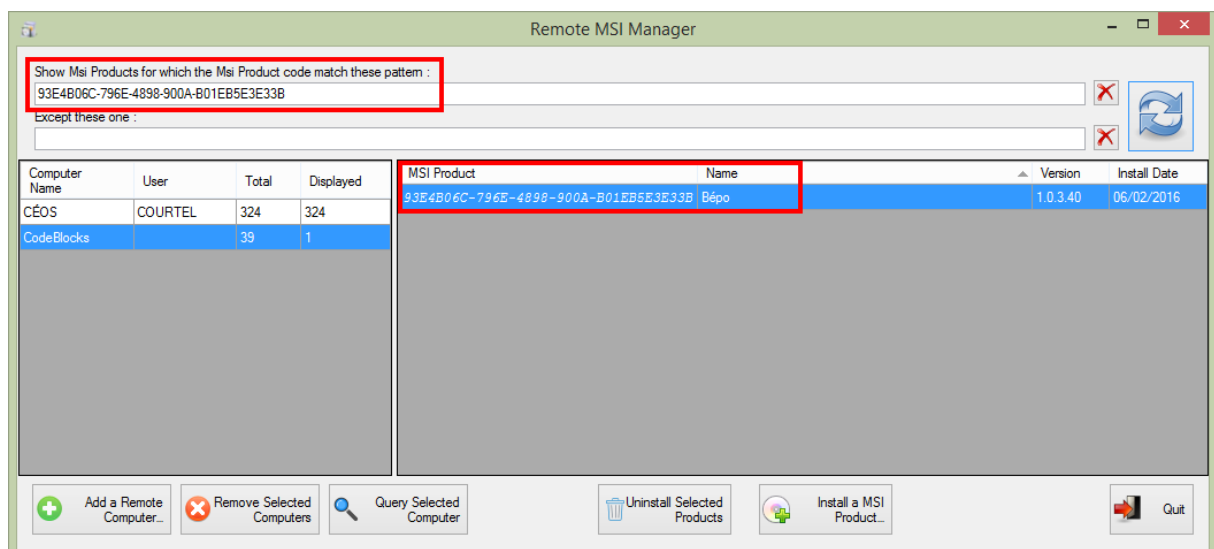


Figure 8: Filtering on one product



You can set more than one MSI Product Code, separated by a «;», to see more than one MSI Product.

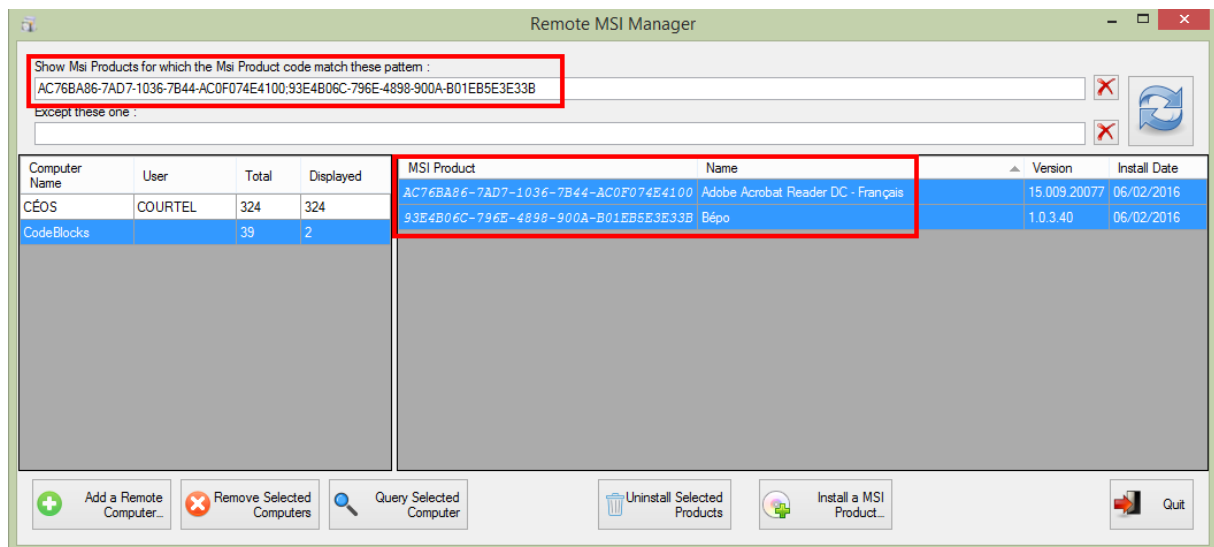


Figure 9: Displaying more than one product

VIII. Using WildCards

You can use a «%» to replace zero or more characters.

Use this pattern to display all release from 6 to 8 of Java

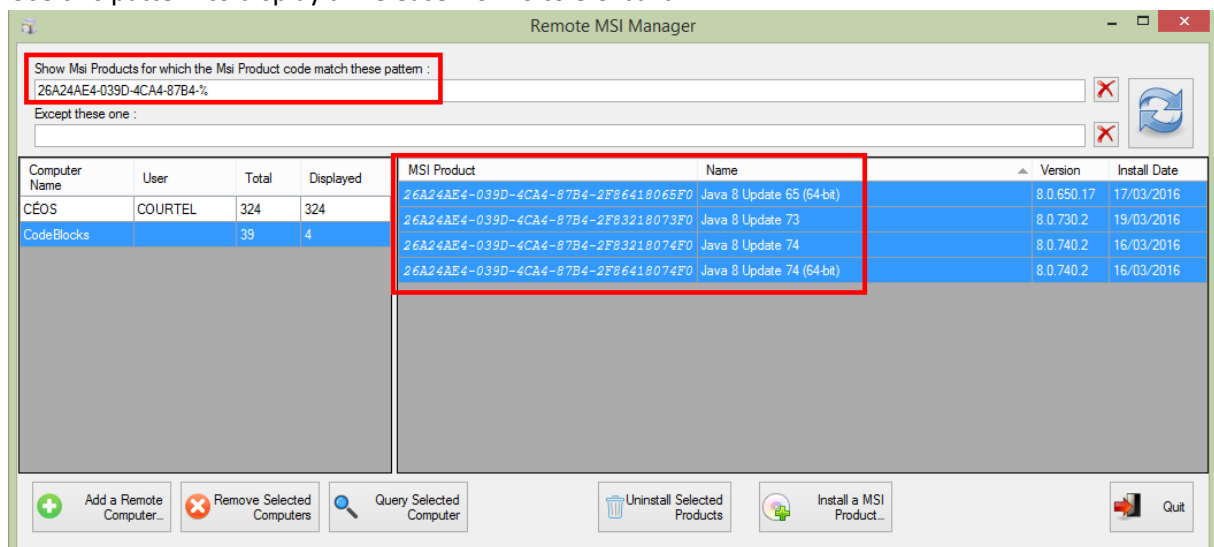


Figure 10: Displaying all Java 6,7,8



Use the «_» character to replace any character. Displaying all 32bit release of Java 8 update 7x

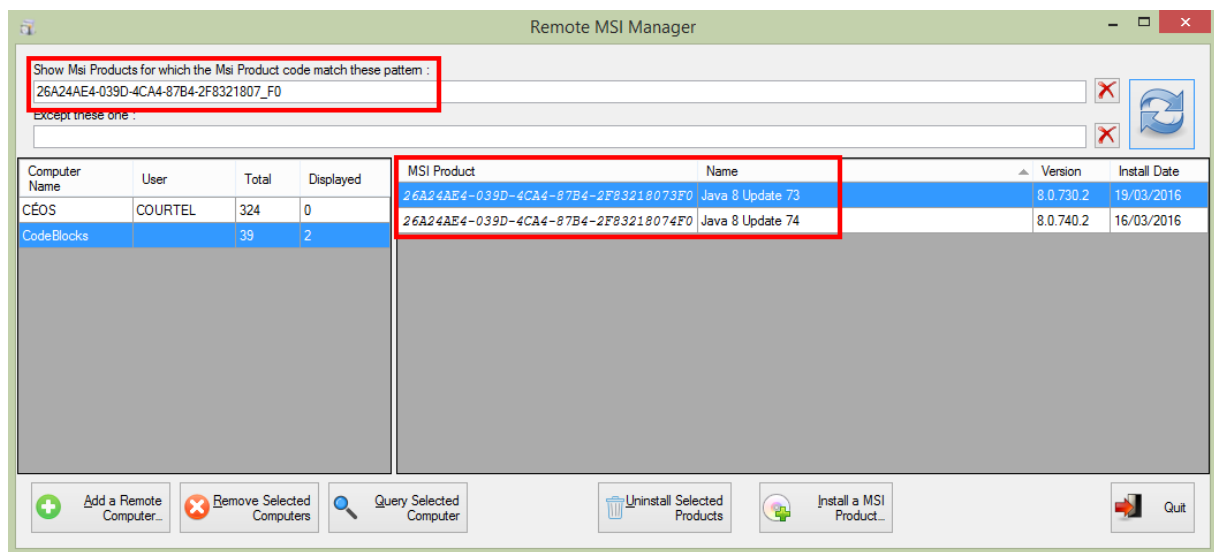


Figure 11: All 32bit Java 8 Update 7x

Displaying all release of Java 8 Update 7x, whatever the bitness.

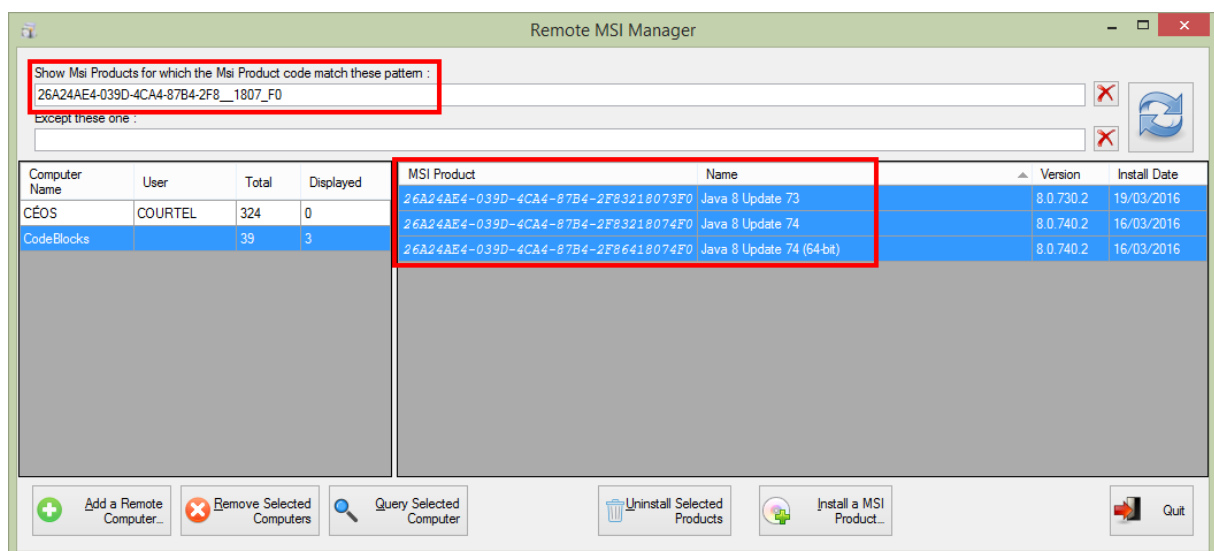


Figure 12: All Java 8 Update 7x, whatever the bitness

The second TextBox allow to exclude some MSI Product from the selection.

Here how to display all Java except Java 8 Update 74, whatever the bitness.

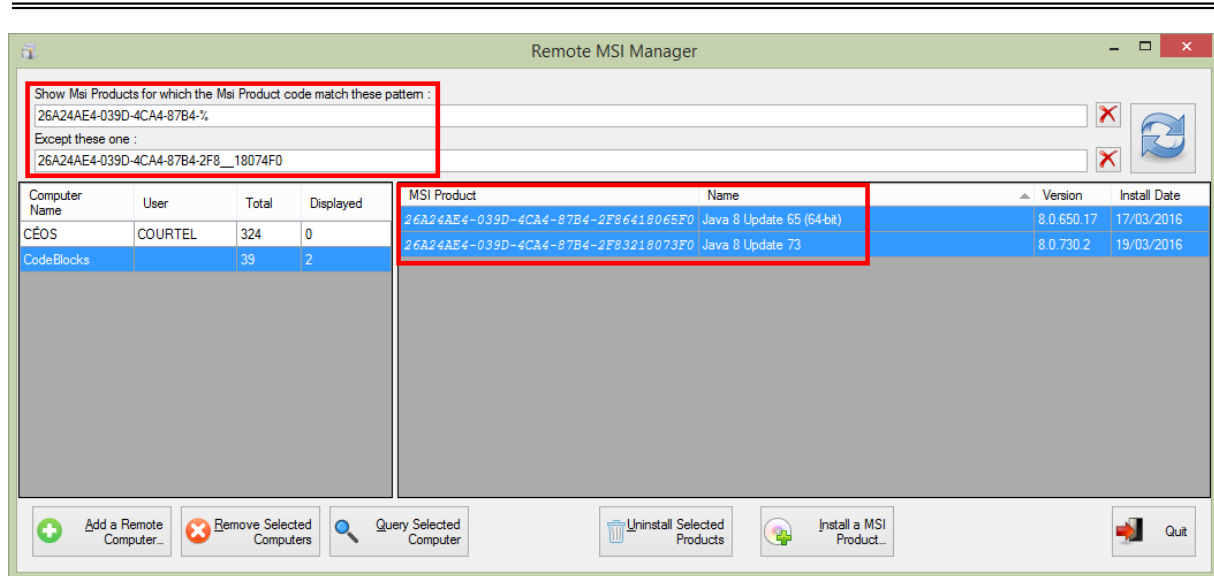


Figure 13: All Java except Java 8 Update 74, whatever the bitness

IX. Uninstalling MSI Products

Select one or more MSI Products to uninstall and click on the «Uninstall Selected Products» button. Confirm your chose. These products will be uninstalled from the selected computer.

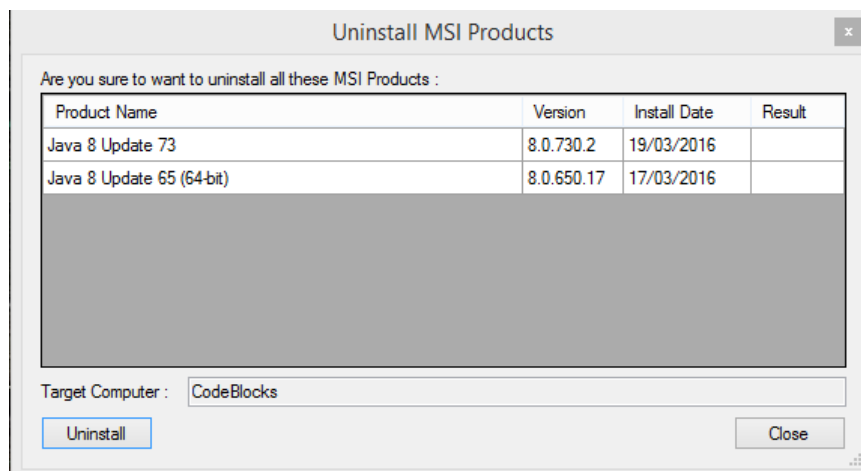


Figure 14: Uninstalling two products

X. Installing a MSI Product


Select a computer and click on the «Install a MSI Product» button.

Browse to the MSI file, eventually add files/folders need for the installation, and click on «Install».


All files and folders will be copied on the remote computer, and the installation will start. The result will be displayed once the installation is finish.




Install a MSI Product


Msi file path :  Browse...


Example : C:\Temp\example.msi

Additional files : ☐ C:\Program Files (x86)\StarUML\templates\Default.mdj  Add Files...

 Remove Files

Example : C:\Temp\example.mst

Additional folders : ☐ C:\Program Files (x86)\StarUML\samples  Add Folders...

 Remove Folders



Example : C:\Temp

Optional parameters :

Target Computer :

Status :

Result :

 Install  Close

Please, report any issue at: <https://remotemsimanager.codeplex.com/workitem/list/basic>

And comments at: <https://remotemsimanager.codeplex.com/discussions>