

# Install Guide

System Requirements..... 1

Preparation for Installation. .... 1

Installation..... 2,  
3, 4, 5, 6

Uninstallation / Repairing ..... 7

## System Requirements

### Operating Systems:

Microsoft Windows Server 2008 x64

### Servers:

SharePoint Release: Microsoft SharePoint Foundation 2010 or Microsoft SharePoint Server 2010 (for SP2010 products).  
Microsoft .NET Framework 2.0 or 3.0

### Browser:

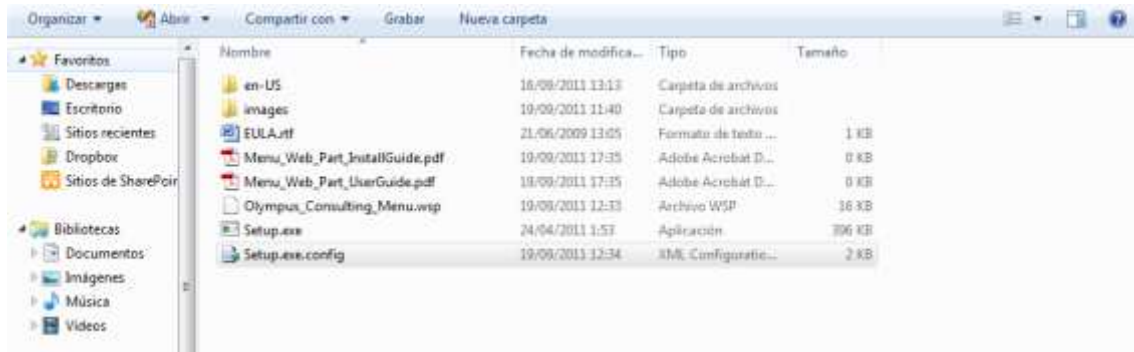
Microsoft Internet Explorer 8+ is recommended for Advanced Administration features.  
Also compatible with:  
Mozilla Firefox 2.0+  
Apple Safari 3.0+  
Google Chrome 2.0+

## Preparation for Installation



Before installation, please, check that your target server meets Menu Web Part system requirements (see above).

## Installation

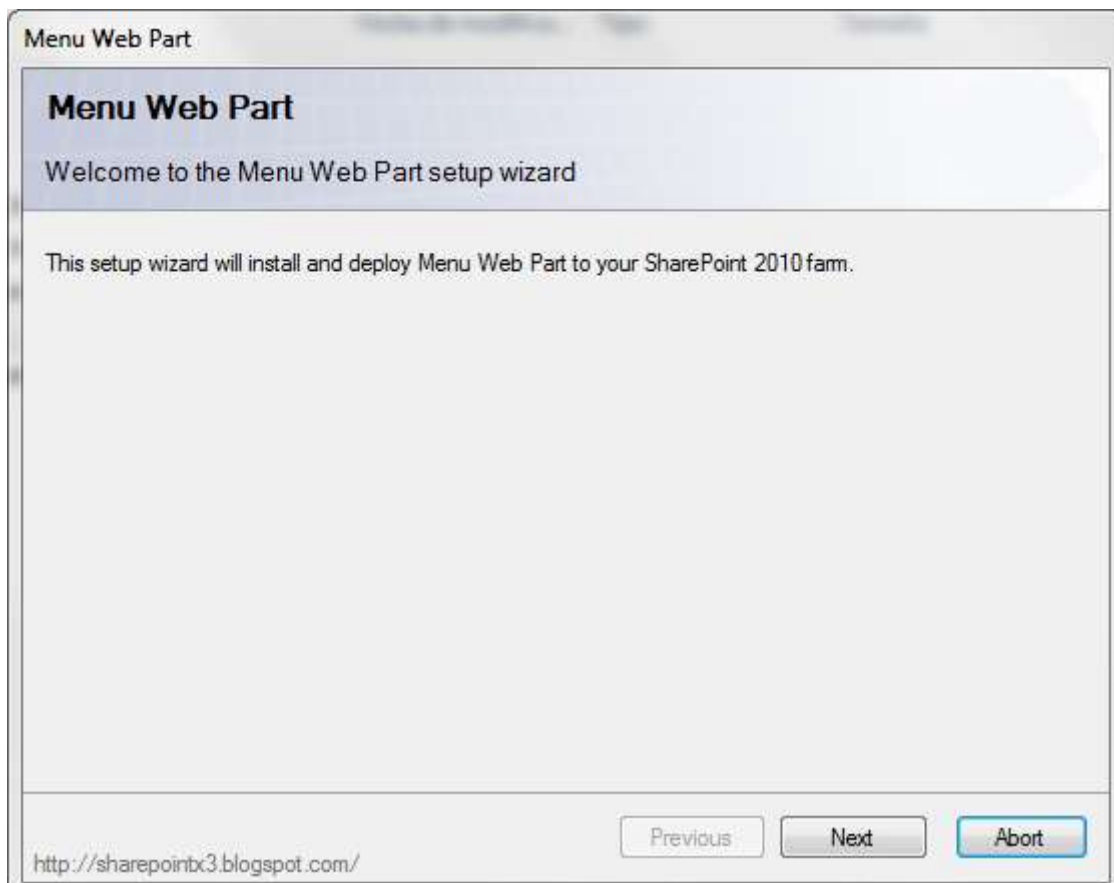
Download Menu Web Part installation package from Codeplex website, unpack the file, and run "Setup.exe".

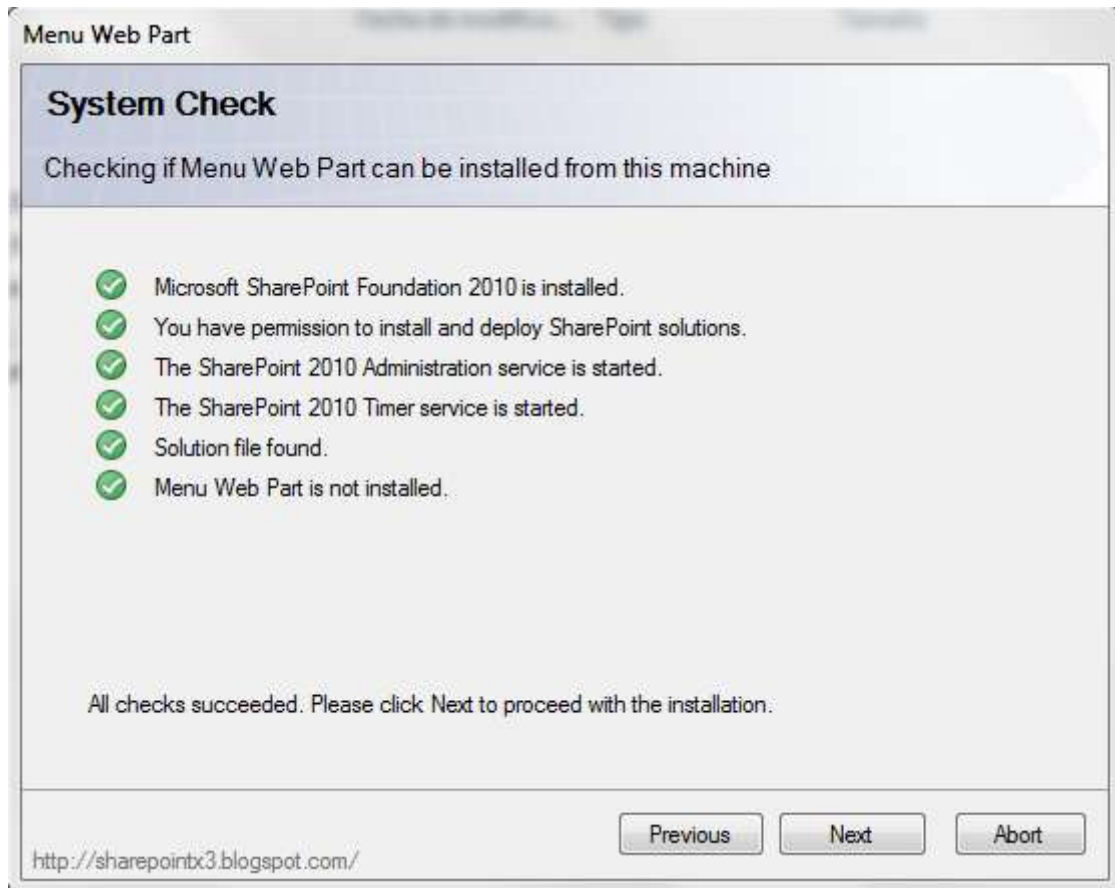


**Note:** You must be the SharePoint Farm Administrator and following MS Windows services should be running:

-  Windows SharePoint Services Administration
-  Windows SharePoint Services Timer

After system check is finished, click "Next".





After reading License Agreement, click "Accept" and go to next step.

Menu Web Part

## End-User License Agreement

Please read the following license agreement carefully

### End User License Agreement (EULA)

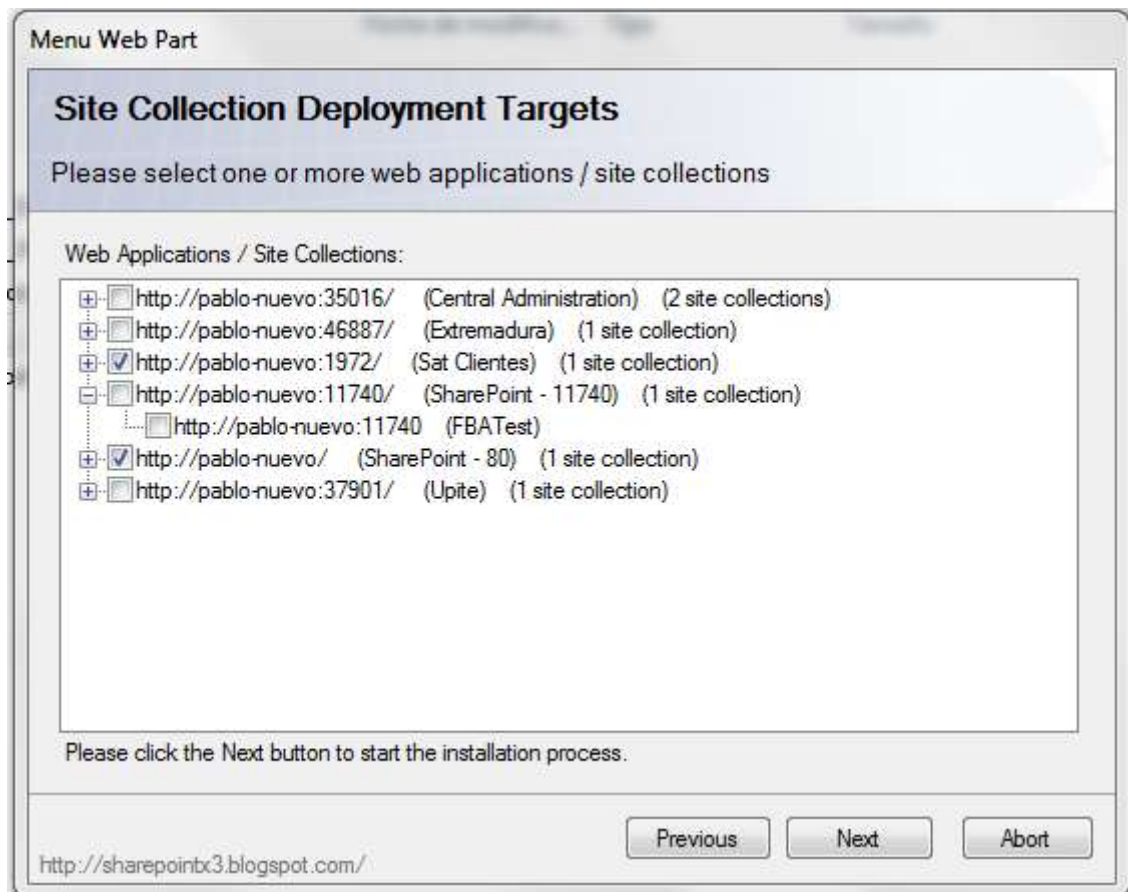
Insert your own legal conditions here....

☒ I accept the terms in the License Agreement

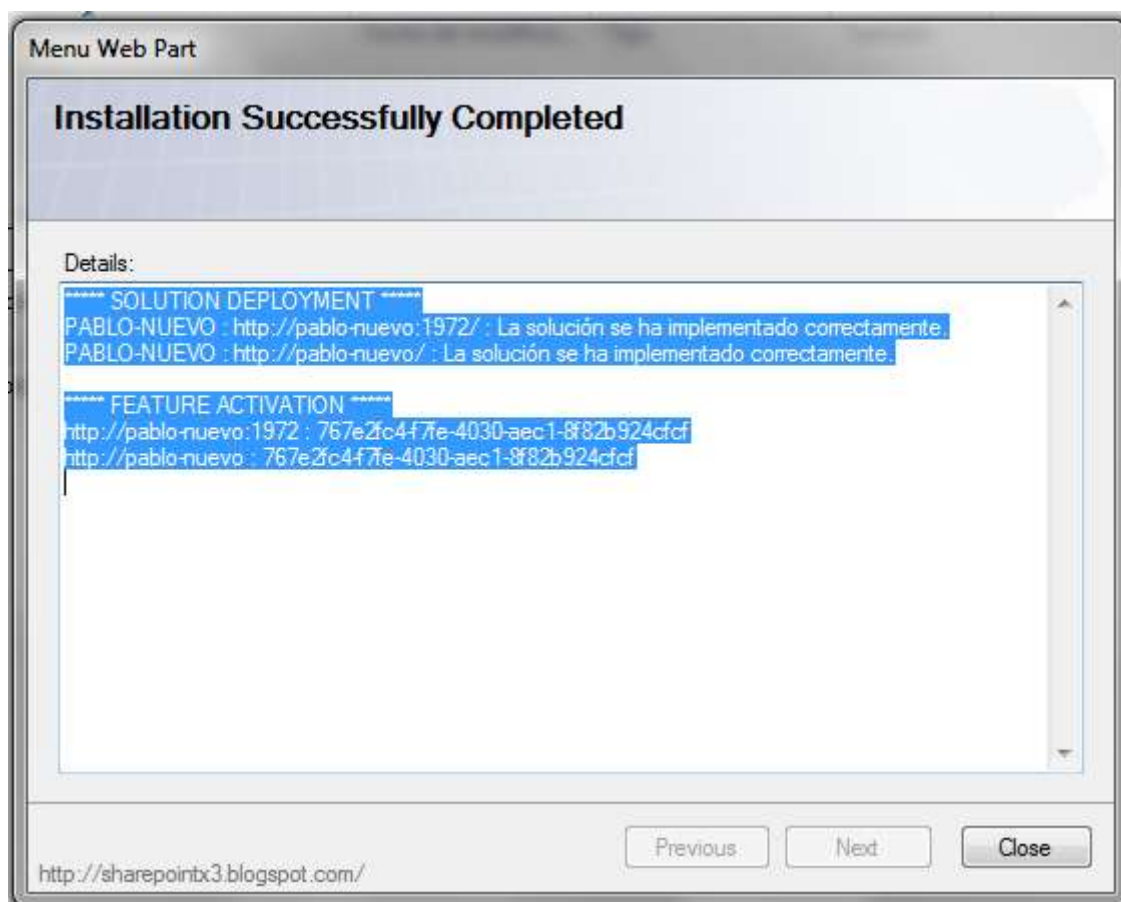
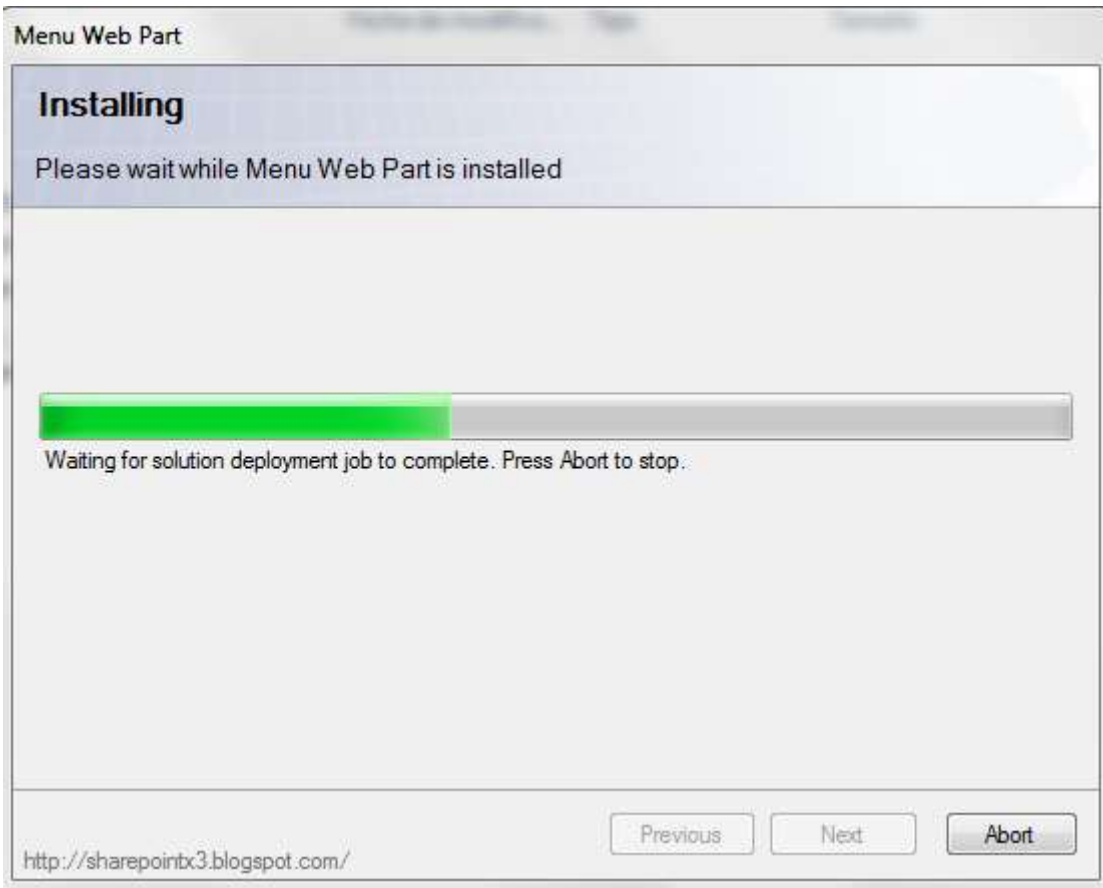
<http://sharepointx3.blogspot.com/>

[Previous](#) [Next](#) [Abort](#)

Select one or more web applications and click "Next".



Wait for install to succeed, click "Next" to check deployment status details.



## Uninstallation / Repairing

Execute **Setup.exe** from your installation package. On the Repair and Remove section, select Remove radio button and click "Next", the Menu Web Part will be uninstalled (**Be aware that language list and menu list used by this web part will be deleted**). Or select "Repair" - to repair Menu Web Part.

