

# Import Spreadsheet to SharePoint List Feature



## Quick Information:

Product Name:	Import Spreadsheet to SharePoint List
Version:	1.1
Release Date:	July 14 <sup>th</sup> , 2009
System Requirements:	Windows SharePoint Services (WSS 3.0)/MOSS 2007
License:	Microsoft Permissive
Author:	<a href="#">Ramp Technology Group</a>
Homepage:	<a href="http://spreadsheet2splist.codeplex.com">http://spreadsheet2splist.codeplex.com</a>

## Description:

Import from Spreadsheet to SharePoint List is missing facet to WSS3.0/MOSS 2007 List features. SharePoint lets a user create a custom list from a spreadsheet, export data from a SharePoint List to a spreadsheet, but lacks the ability to import new data to an existing SharePoint list.

This SharePoint feature developed in C# .Net is an easy to install and intuitive to use feature that will allow a user to select an excel spreadsheet, map the SharePoint list columns to the spreadsheet columns (top row in the sheet) and import data.

## Disclaimer:

This software is provided as is without warranty of any kind, either expressed or implied. The entire risk as to the quality and performance of the software is with you. Should the software prove defective, you assume the cost of all necessary servicing, repair, or correction. In no event shall the author, copyright holder, or any other party who may redistribute the software be liable to you for damages, including any general, special, incidental, or consequential damages arising out of the use or inability to use the software(including, but not limited to, loss of data, data being rendered inaccurate, loss of business profits, loss of business information, business interruptions, loss sustained by you or third parties, or a failure of the software to operate with any other software) even if the author, copyright holder, or other party has been advised of the possibility of such damages.

## Features:

- ✓ Add this feature to the SharePoint solution store
- ✓ Deploy the feature on one or more web applications
- ✓ Activate feature on or more site collections or feature scope limited to a Site (Site Collection)
- ✓ Retract and remove the feature

## Installation and Feature Activation:

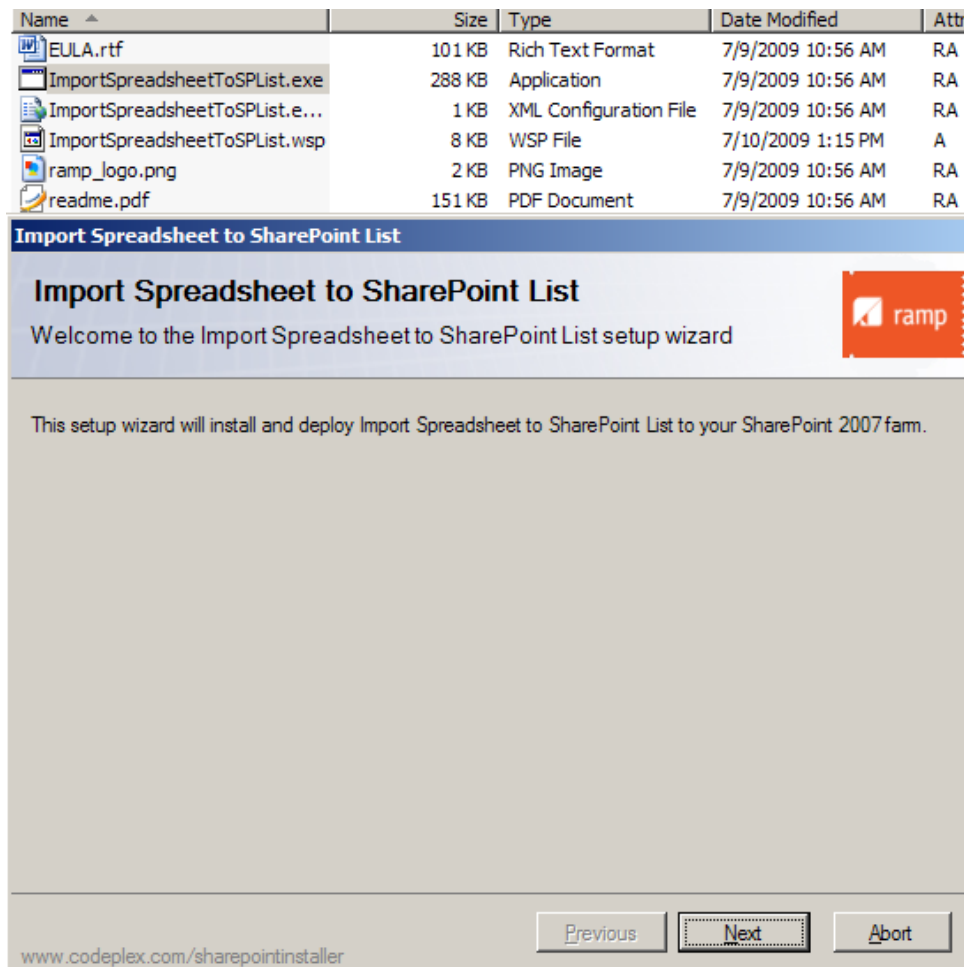
To install this feature, just run ImportSpreadsheetToSPList.exe and follow the wizard. The following snapshots provide an overview of the steps in the installation wizard.

# Import Spreadsheet to SharePoint List Feature



## Step 1:

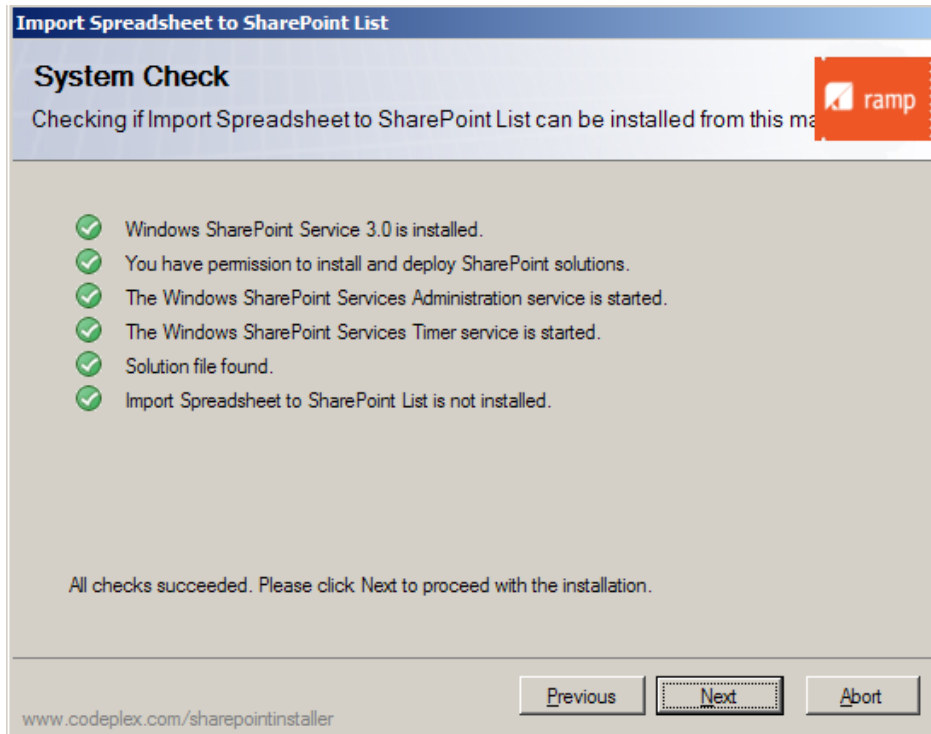
Run ImportSpreadsheetToSPList.exe file and click on Next



## Step: 2

The wizard checks for the pre-requisite components for the feature installation (existence of WSS 3.0, permission to install this feature) and verifies that this feature is not already installed in the solution store.

# Import Spreadsheet to SharePoint List Feature



## Step: 3

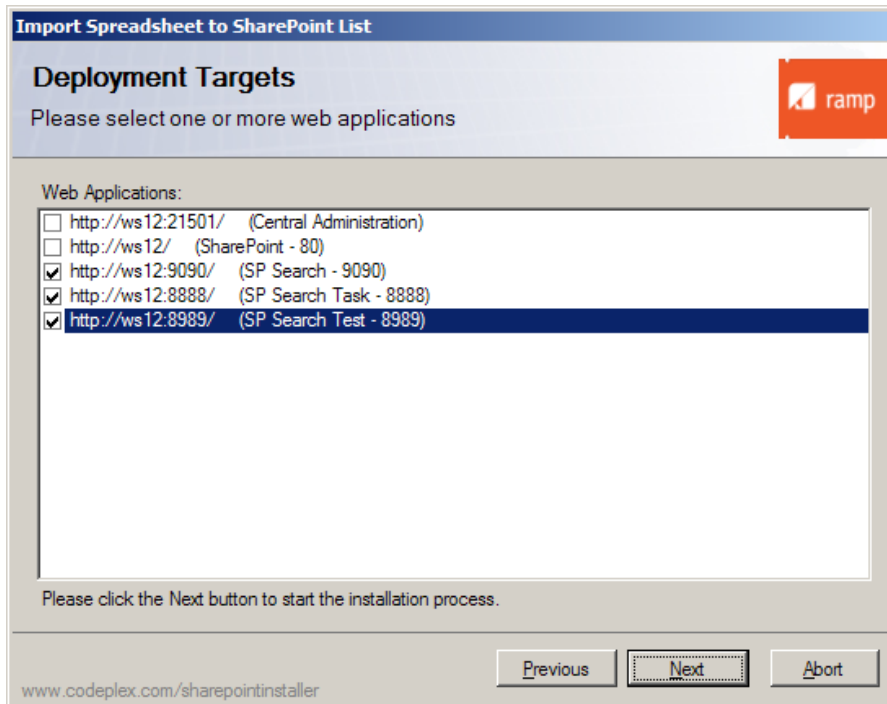
Read End-User License Agreement and Click on Accept the terms in the agreement checkbox. Click on Next.



# Import Spreadsheet to SharePoint List Feature

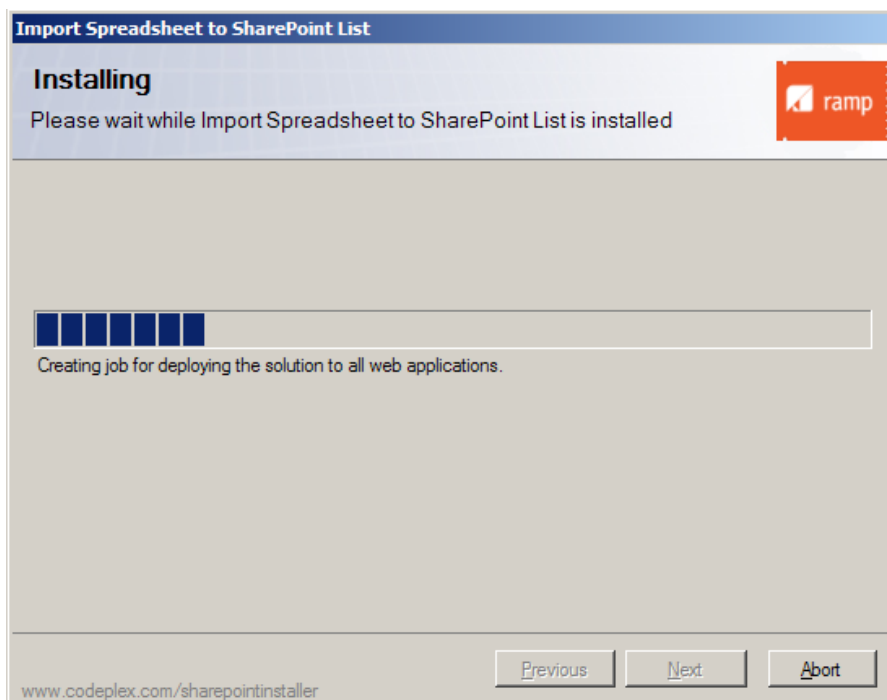
## Step: 4

Select the web applications on which this feature is to be installed.  
And Click on Next.

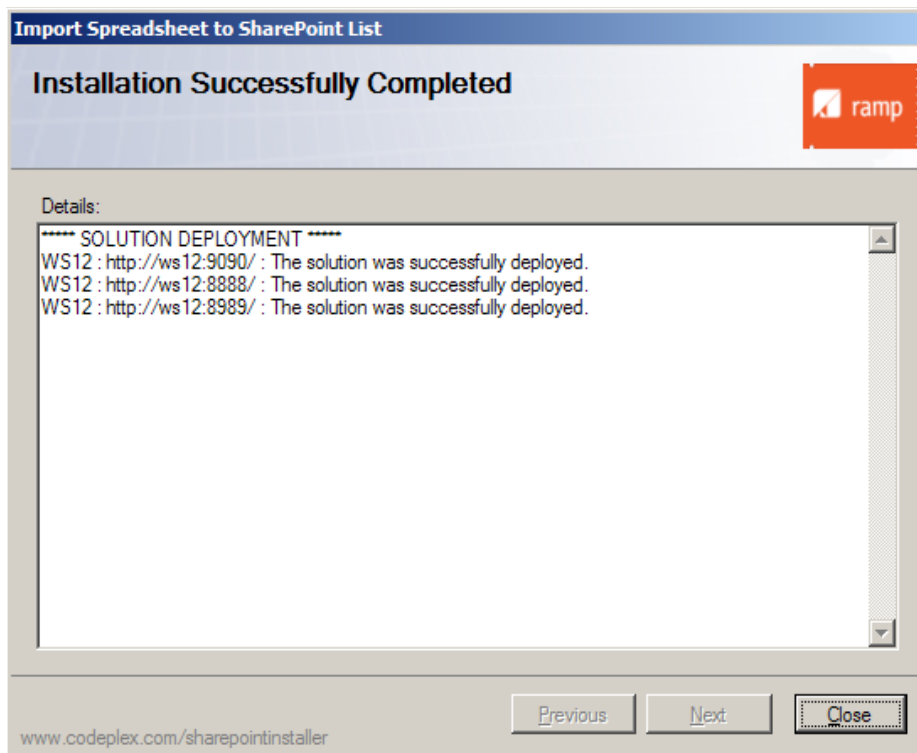
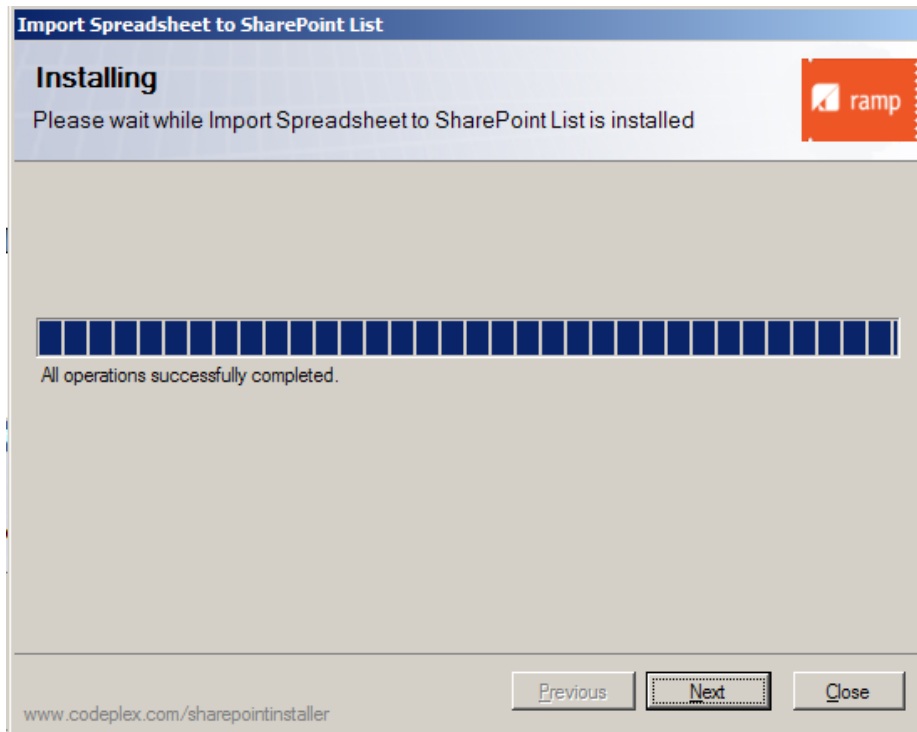


## Step: 5

Please wait until the installation completes.

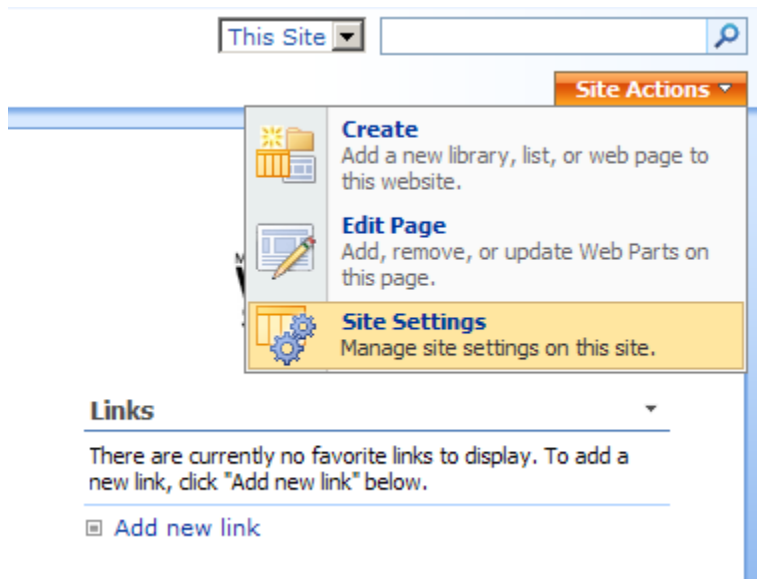


## Import Spreadsheet to SharePoint List Feature



## Activating the Feature:

1. Open a web application for which this list feature installed. (Selected in Step: 4)
2. Click on Site Actions → Site Settings



**Note:** These snapshots are of a team site. Paths will vary for publishing sites.

3. Click on Site Collection features under Site Collection Administration


### Site Collection Administration

- [Recycle bin](#)
- [Site collection features](#)
- [Site hierarchy](#)
- [Portal site connection](#)

4. Identify the "Import Spreadsheet To SP List" feature and Click on Activate to activate the feature.

Search Test > Site Settings > Site Features

## Site Collection Features

Name		Status
	<b>ImportSpreadsheetToSPList</b> Import data from excel to SharePoint list	<a href="#">Activate</a>

5. After activating the feature, go to any custom list available in that site collection, click on Actions menu and find the feature is available to use and import data of a spreadsheet.

